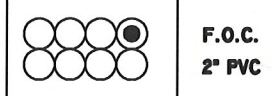


2" PVC
F.O.C.



F.O.C.
2" PVC

MANHOLE #40 DETAIL

GROUTING	YES
RACKING	YES
CLEAN	YES
CONDUITS	PVC SCH 40
SIZE	2"
QUANTITY	8
CABLE TAGS PLACED	
DUCT PLUGS & TYPE	
CABLE ID NO.	M97161
SEQUENTIAL IN	1969M
SEQUENTIAL OUT	1994M
SPLICE	NO
LOCATE WIRE	YES
STATION NO	100+37

GROUND ROD	1
#6 GROUND WIRE	5'
LOCATE WIRE	400'
3-1 1/4" INNERDUCT	0
4" HDPE CONDUIT	0
4'x4'x8' MH	0
2 QUADS	394'
144 FIBER	400'
2" UNIVERSAL DUCT PLUG	14
2" FIBER OPTIC SIMPLEX DUCT PLUG	2
6'x4'x8' MH	1
SLACK COIL	100'
CABLE TAGS	2
BURIED CABLE WARNING TAPE	394'
1-1/4" UNIVERSAL BLANK DUCT PLUG	0

REEL #	M97161	PERMIT AGENCY:	CITY OF CLEVELAND
CABLE ID #	XX	PERMIT #	STP9766
TYPE	XX		STA 58+63 TO STA 123+53

A	6-1-01	AS-BUILTS	RR
B			
C			
D			
E			
F			
REV	DATE	DESCRIPTION	BY

RR	RR X-MG	JOINT POLE	WTR MTR	ELC MTR	FIBER MTR
	RR SWRCH(PCS)	LIGHT POLE	GAS MTR	TRAMP MTR	TRAMP MTR
	FENCE	STREET LIGHT POLE	GAS VALVE	STREAMER	STREAMER
	TELE MTR	TRAMP LIGHT POLE	GAS VENT	UNK MTR	UNK MTR
	XO MTR MTR	CATCH BASIN	STORM DRAIN	POWER BOX	POWER BOX
	XX TELE MTR	TRAMP	STORM GRATE	MARKER MTR POLE	MARKER MTR POLE
	TEL-PWR CATV FIB	HYDRANT	STORM MTR	CORC MTR	CORC MTR
	CULVERT	WATER MTR	RAIL MTR	TRAMP CONTROL CAB	TRAMP CONTROL CAB
	R/W LINE	WATER VALVE	CATV MTR	TRAMP BOX	TRAMP BOX

FIBER OPTICS

N.L.O. CABLE KEY

----- PROPOSED U.S.A.

----- PROPOSED A.S. CA.

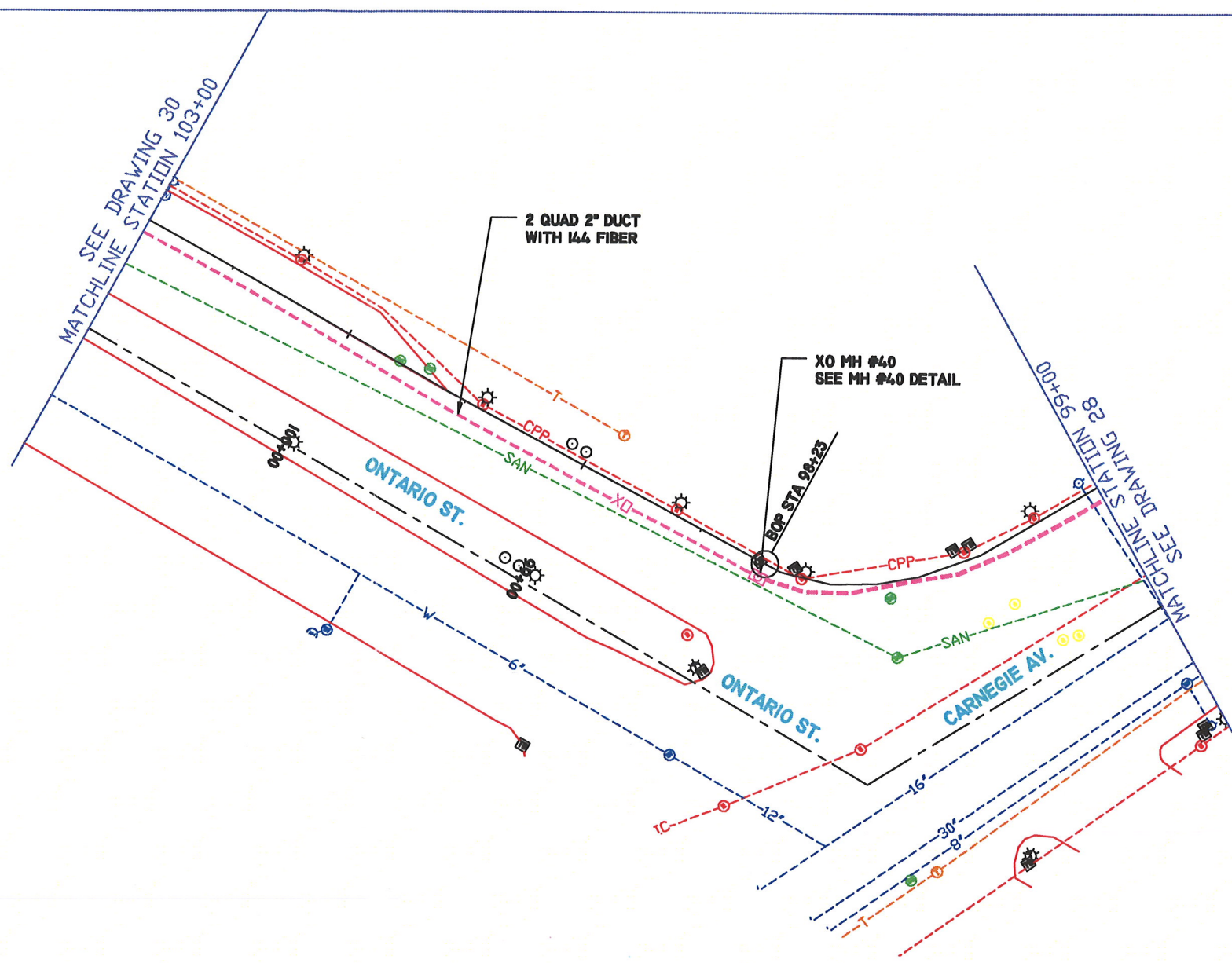
----- PROPOSED B.U.R.I.E.D. CA.

XO COMMUNICATIONS

Not just talk.

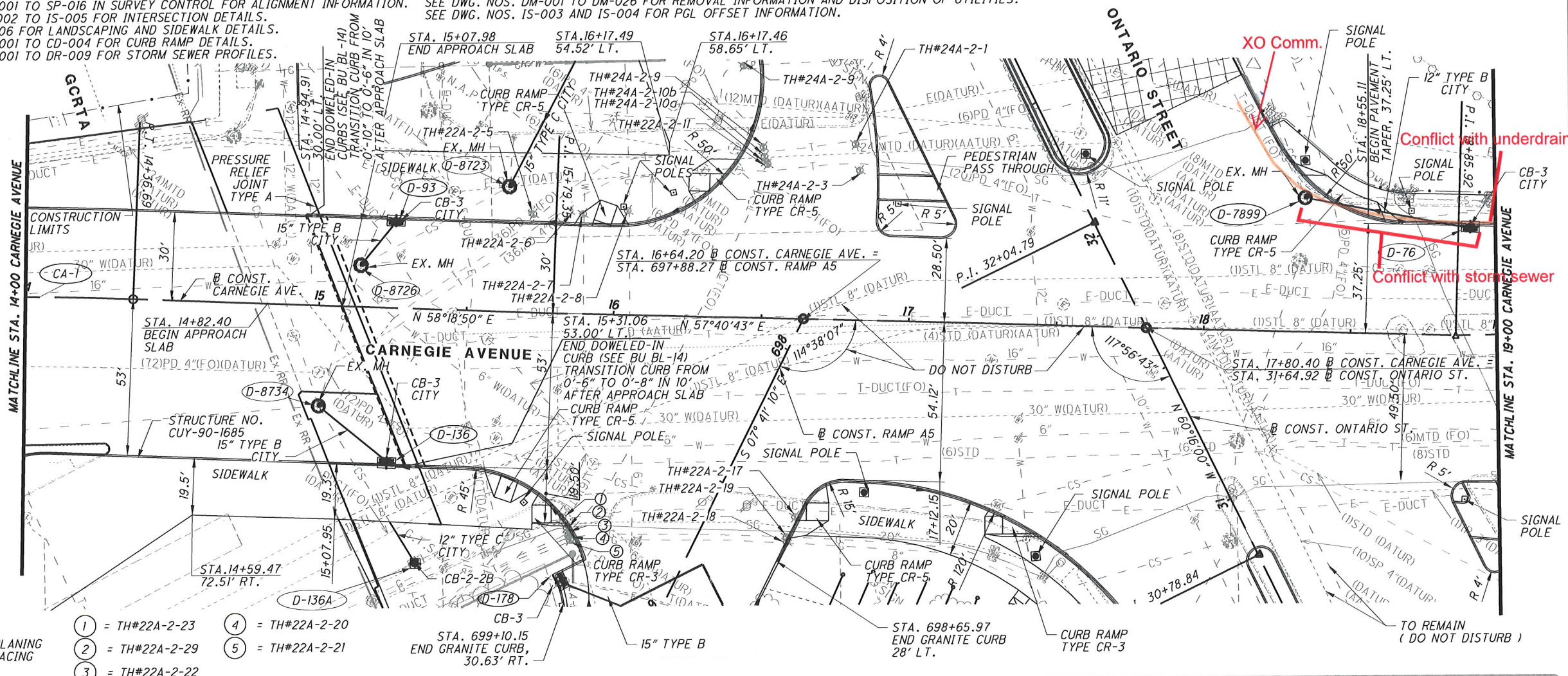
THIS DRAWING IS THE PROPERTY OF XO COMMUNICATIONS AND IS TO BE USED ONLY FOR THE PROJECT AND SITE SPECIFICALLY IDENTIFIED HEREIN. IT IS NOT TO BE REPRODUCED OR COPIED IN ANY MANNER WITHOUT THE WRITTEN PERMISSION OF XO COMMUNICATIONS. ANY REPRODUCTION OR COPIING OF THIS DRAWING FOR ANY OTHER PROJECT OR SITE WITHOUT THE WRITTEN PERMISSION OF XO COMMUNICATIONS IS STRICTLY PROHIBITED.

DRAWN BY	RWR	PROJECT NO.	1901BB00009	CITY	CLEVELAND	SHEET	29
DATE	6-25-2001	CAS JOB NO.	005L42	COUNTY	CUYAHOGA	of	36
SCALE	1" = 50'	DWG. TITLE	AS-BUILT PLAN	STATE	OHIO		
CITY OF CLEVELAND							
CLEVELAND INTERNET BUILD - PHASE 2							



- 102+99 F. HYDRANT -17.0' EOP
- 102+94 XO FIBER +4.83' EOP
- 102+74 XO FIBER +4.6' EOP
- 102+54 XO FIBER +4.5' EOP
- 102+44 ST. LIGHT -17.0' EOP
- 102+34 XO FIBER +4.83' EOP
- 102+14 XO FIBER +5.16' EOP
- 101+94 XO FIBER +5.5' EOP
- 101+74 XO FIBER +5.83' EOP
- 101+58 ST. LIGHT -5.0' EOP
- 101+54 XO FIBER +6.0' EOP
- 101+34 XO FIBER +6.0' EOP
- 101+14 XO FIBER +6.16' EOP
- 100+94 XO FIBER +6.0' EOP
- 100+75 ST. LIGHT -5.0' EOP
- 100+74 XO FIBER +5.6' EOP
- 100+54 XO FIBER +5.5' EOP
- 100+37 XO MH #40 +5.5' EOP
- 100+21 ST. LIGHT -5.0' EOP
- 100+19 XO FIBER +5.0' EOP
- 100+02 XO FIBER +3.3' EOP
- 99+81 XO FIBER +1.16' EOP
- 99+61 XO FIBER +3.83' EOP
- 99+40 XO FIBER +4.5' EOP
- 99+26 ST. LIGHT -5.0' EOP
- 99+20 XO FIBER +5.0' EOP
- 99+05 F. HYDRANT -5.0' EOP
- 99+00 XO FIBER +5.16' EOP

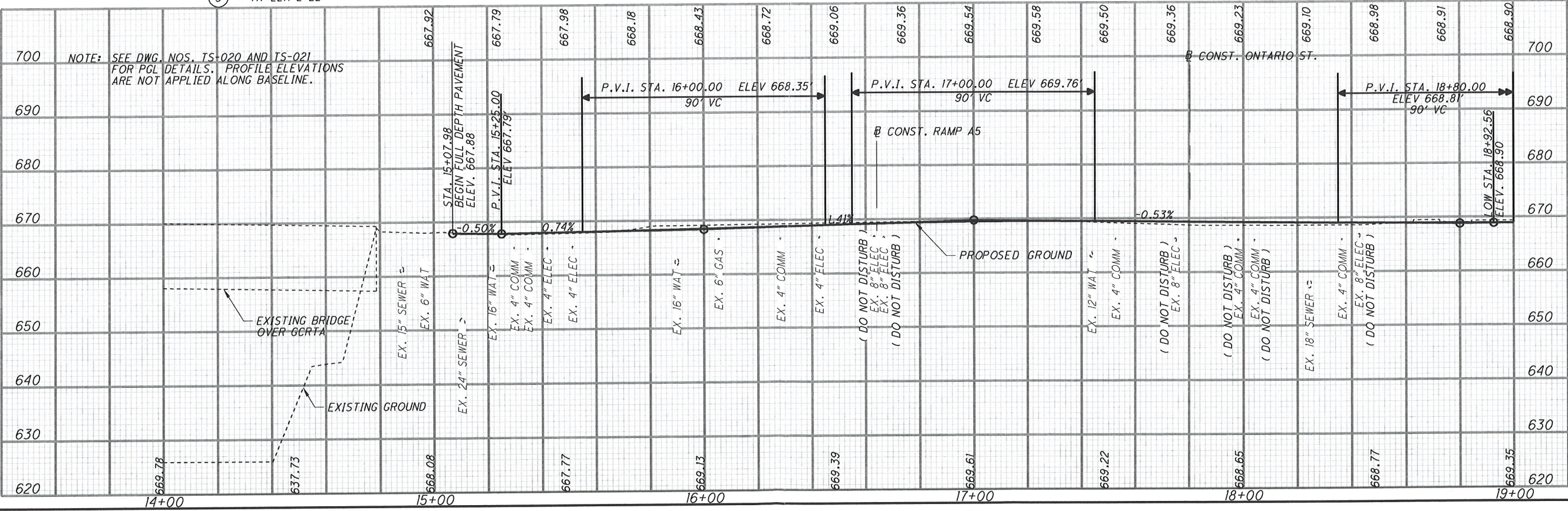
NOTE: SEE DWG. NOS. SP-001 TO SP-016 IN SURVEY CONTROL FOR ALIGNMENT INFORMATION. SEE DWG. NOS. DM-001 TO DM-026 FOR REMOVAL INFORMATION AND DISPOSITION OF UTILITIES. SEE DWG. NOS. IS-002 TO IS-005 FOR INTERSECTION DETAILS. SEE DWG. NO. LS-006 FOR LANDSCAPING AND SIDEWALK DETAILS. SEE DWG. NOS. CD-001 TO CD-004 FOR CURB RAMP DETAILS. SEE DWG. NOS. DR-001 TO DR-009 FOR STORM SEWER PROFILES.



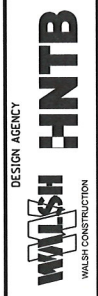
LEGEND



- 1 = TH#224-2-23
- 2 = TH#224-2-29
- 3 = TH#224-2-22
- 4 = TH#224-2-20
- 5 = TH#224-2-21



NO.	REVISIONS	DATE
A	INTERIM SUBMITTAL	12/09/2010
B	FINAL SUBMITTAL	08/03/2011
C	FINAL SUBMITTAL ADDITIONAL INFORMATION	08/17/2011
D	FINAL SUBMITTAL TO ODOT	09/30/2011
E	FINAL COMPLIANCE	11/03/2011
F	FINAL RESUBMITTAL TO ODOT - DRAINAGE	11/30/2011
G	APPROVED FOR CONSTRUCTION	01/06/2012



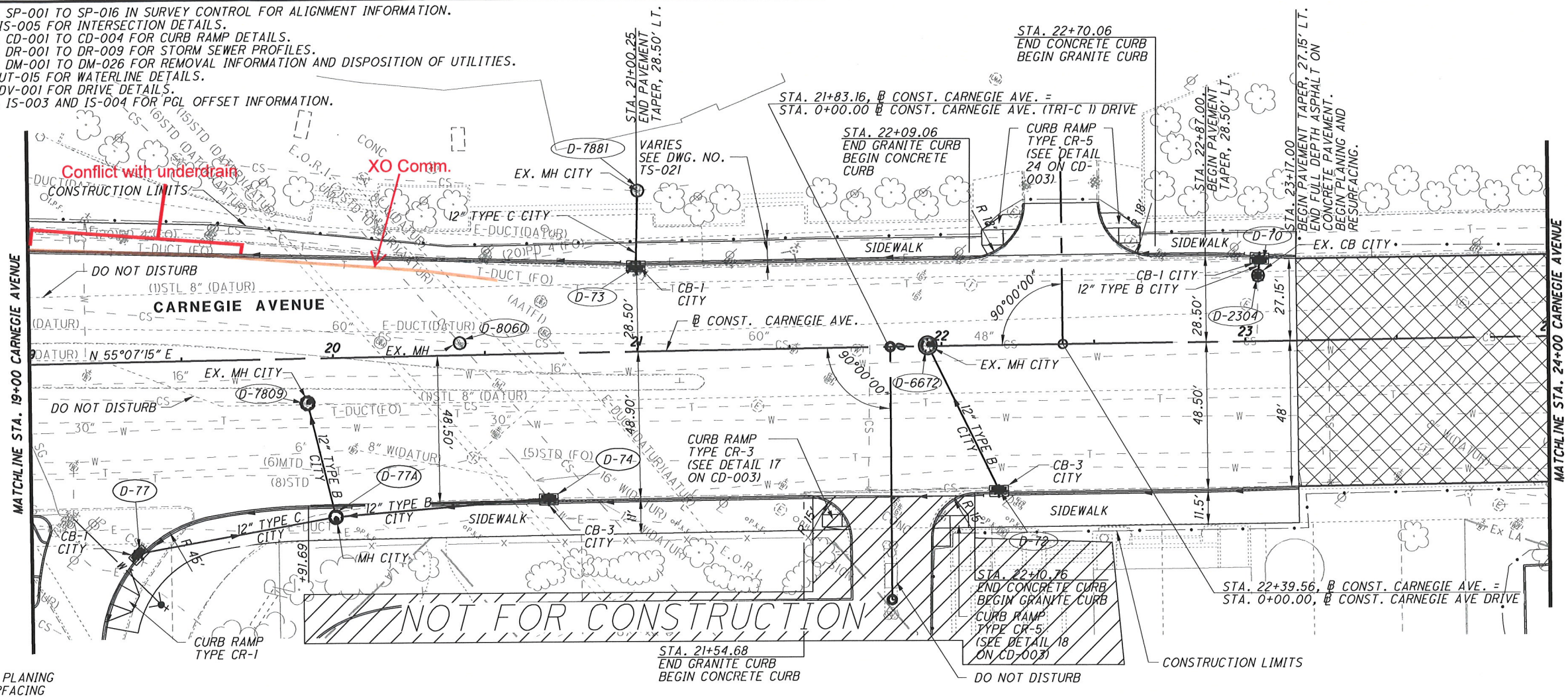
ROADWAY GATEWAY
PLAN AND PROFILE
CARNEGIE AVENUE
STA. 14+00 TO STA. 19+00



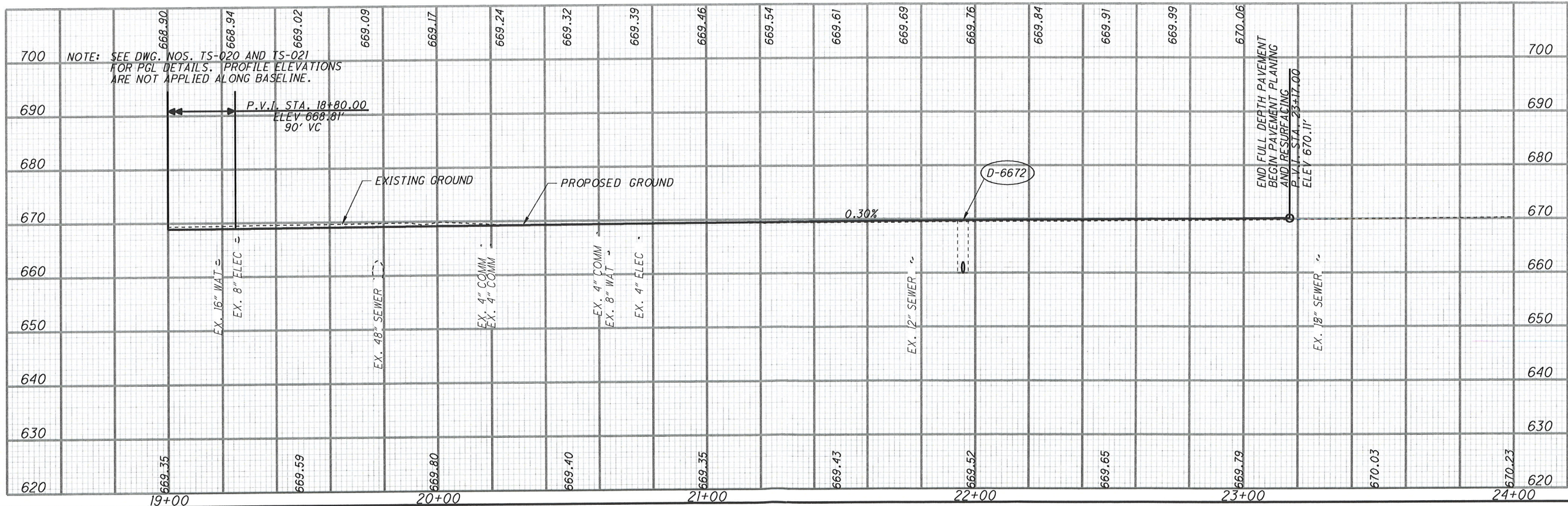
CUY-90-14.90
 DWG. NO. PP-031

DESIGNED EJK	CHECKED JRG	126 349
-----------------	----------------	------------

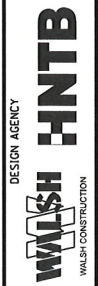
NOTE: SEE DWG. NOS. SP-001 TO SP-016 IN SURVEY CONTROL FOR ALIGNMENT INFORMATION.
 SEE DWG. NO. IS-005 FOR INTERSECTION DETAILS.
 SEE DWG. NOS. CD-001 TO CD-004 FOR CURB RAMP DETAILS.
 SEE DWG. NOS. DR-001 TO DR-009 FOR STORM SEWER PROFILES.
 SEE DWG. NOS. DM-001 TO DM-026 FOR REMOVAL INFORMATION AND DISPOSITION OF UTILITIES.
 SEE DWG. NO. UT-015 FOR WATERLINE DETAILS.
 SEE DWG. NO. DV-001 FOR DRIVE DETAILS.
 SEE DWG. NOS. IS-003 AND IS-004 FOR PGL OFFSET INFORMATION.



LEGEND



NO.	REVISIONS	DATE
A	INTERIM SUBMITTAL	12/09/2010
B	FINAL SUBMITTAL	08/03/2011
C	FINAL SUBMITTAL ADDITIONAL INFORMATION	08/17/2011
D	FINAL SUBMITTAL TO ODOT	09/30/2011
E	FINAL COMPLIANCE	11/03/2011
F	FINAL RESUBMITTAL TO ODOT - DRAINAGE	11/30/2011
G	APPROVED FOR CONSTRUCTION	01/06/2012



ROADWAY GATEWAY



10
20
40
HORIZONTAL SCALE IN FEET

PLAN AND PROFILE
 CARNEGIE AVENUE
 STA. 19+00 TO STA. 24+00

CUY-90-14.90

DWG. NO. PP-032

DESIGNED: EJK
 CHECKED: JRG
 127
 349